



HAPPY



valentine's



DAY



Dear 4-H Members, Parents,
Volunteers and Teachers,
Check out our February clubs
and activities. If you have any
questions about any Clubs,
Groups or Activities going on
feel free to call.

(270)-692-2421

Amanda Sublett-

4-H Youth Development Agent

Amanda Lee Sublett

or

Kendra Lyvers-

4-H Youth Development Assistant

Kendra Lyvers

Important Dates:
February

Cloverbuds 10th
5:00pm-6:00pm

STEAM 10th
6:00-7:00pm

Boots and Saddle 25th
5:30pm

Livestock Club 13th
6:00pm

Cooperative Extension Service
Agriculture and Natural Resources
Family and Consumer Sciences
4-H Youth Development
Community and Economic Development

Educational programs of Kentucky Cooperative Extension serve all people regardless of economic or social status and will not discriminate on the basis of race, color, ethnic origin, national origin, creed, religion, political belief, sex, sexual orientation, gender identity, gender expression, pregnancy, marital status, genetic information, age, veteran status, or physical or mental disability. University of Kentucky, Kentucky State University, U.S. Department of Agriculture, and Kentucky Counties, Cooperating.

LEXINGTON, KY 40546



Disabilities
accommodated
with prior notification.



CLOVERBUDS

AGES 5-8

• HAPPY •

*Valentine's
Day*

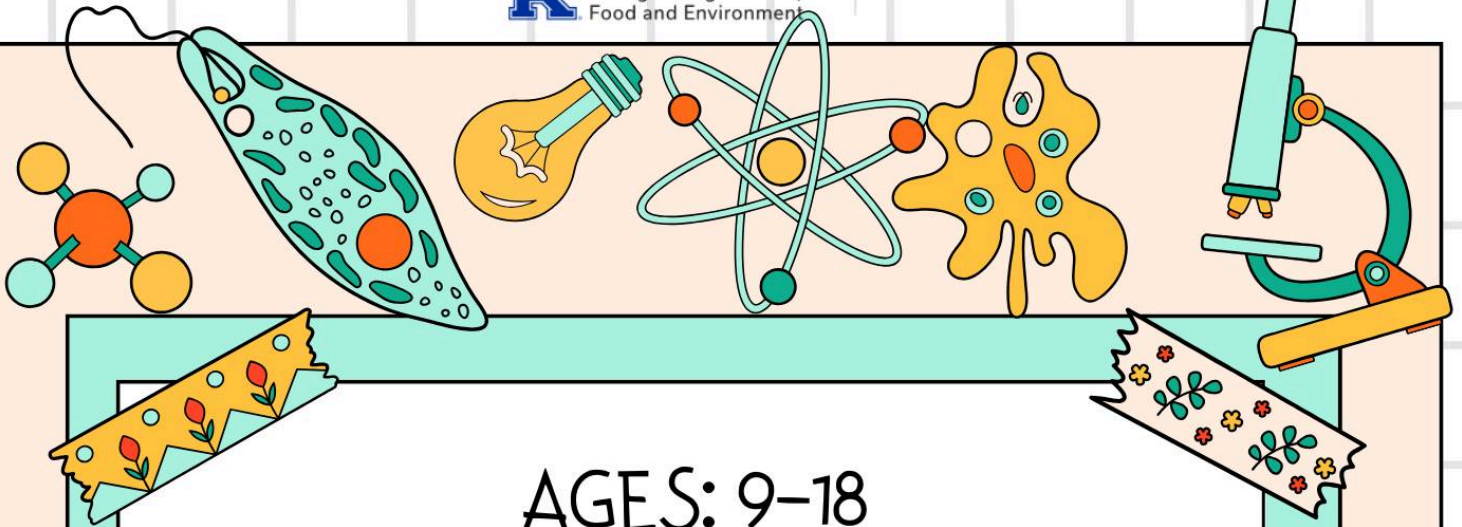
FEBRUARY

10TH

5:00PM-

6:00PM

Join us for a Valentine's
Paint Party
Wear old clothes!



AGES: 9-18
6:00-7:00PM

S.T.E.A.M. CHALLENGE

FEBRUARY 10TH

STEP BY STEP
PAINTING

LOCATION: MARION COUNTY EXTENSION OFFICE



Boots and Saddle



4-H Horse Club

FEBRUARY 25TH

5:30PM

Everyone is welcome, no horse required.



Marion County Cooperative Extension Office
416 Fairgrounds Rd.
Lebanon, Ky. 40033



Join us to learn more about livestock selection with our guest speaker Taylor Graves, Agriculture and Natural Resources Agent, with the Washington County Extension Office .

**Thursday, February 18th
6:00 P.M.**

**Marion County Extension Office
416 Fairgrounds Rd, Lebanon, KY**



Marion County 4-H Livestock Club is for youth ages 9 to 18. You do not have to own livestock to be a member of the livestock club.

Please RSVP by Tuesday, February 14th by calling or texting Paighton at (270) 972- 9153.

Boots and Saddle



5:30PM

DECEMBER 17TH

JANUARY 28TH

FEBRUARY 25TH

MARCH 25TH

APRIL 29TH

MAY 20TH

Marion County Cooperative Extension Office
416 Fairgrounds Rd.
Lebanon, Ky. 40033



AGES 5-8

CL^{VER}BUDS

LOCATION: MARION COUNTY EXTENSION OFFICE

FOR MORE INFORMATION CALL: 270-692-2421

5:00-6:00pm

September 16th

October 14th

November 11th

December 9th

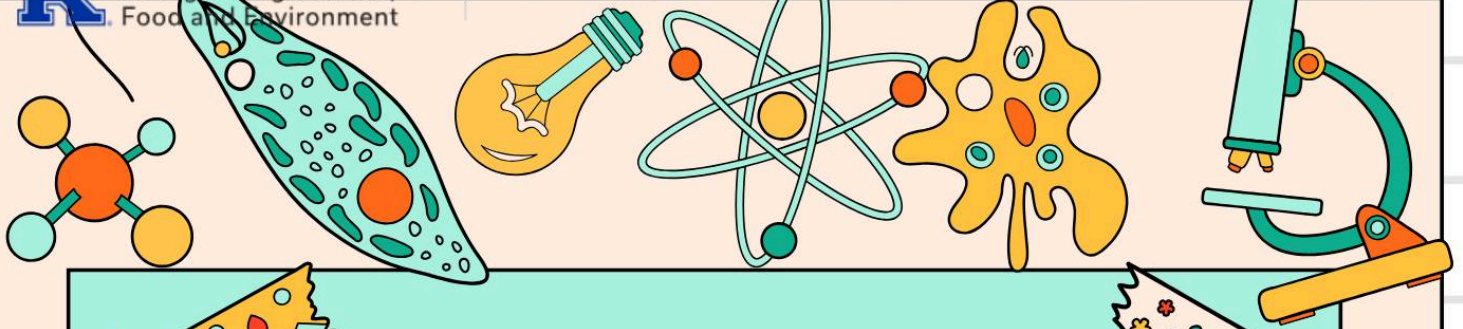
January 13th

February 10th

March 10th

April 14th- End of Year Party





S.T.E.A.M. CHALLENGE

6:00PM-7:00PM

DECEMBER 9TH

JANUARY 13TH

FEBRUARY 10TH

MARCH 10TH

APRIL 14TH - END OF YEAR PARTY

LOCATION: MARION COUNTY EXTENSION OFFICE

FOR MORE INFORMATION CALL: 270-692-2421





Location: Marion County Extension Office

6:00pm

October 29th

November 14th

December 12th

January 9th

February 18th

March 13th

April 3rd

May 8th

June 12th

