



Martin-Gatton
College of Agriculture,
Food and Environment

September HELLO

Important Dates: September

Cloverbuds 8th
5:00pm-6:00pm

September 12th
Ham Marketing
Contract Due

Ham Washing 19th
6:00pm

Ham Days Contest 22nd
5:00pm

Ham Days Auction 27th
10:45am

Livestock Club 28th
6:00pm

Dear 4-H Members, Parents,
Volunteers and Teachers,
Check out our September clubs
and activities. If you have any
questions about any Clubs,
Groups or Activities going on
feel free to call.

(270)-692-2421

Amanda Sublett-

4-H Youth Development Agent

Amanda Lee Sublett

or

Kendra Lyvers-

4-H Youth Development Assistant

Kendra Lyvers

Cooperative Extension Service
Agriculture and Natural Resources
Family and Consumer Sciences
4-H Youth Development
Community and Economic Development

Educational programs of Kentucky Cooperative Extension serve all people regardless of economic or social status and will not discriminate on the basis of race, color, ethnic origin, national origin, creed, religion, political belief, sex, sexual orientation, gender identity, gender expression, pregnancy, marital status, genetic information, age, veteran status, or physical or mental disability. University of Kentucky, Kentucky State University, U.S. Department of Agriculture, and Kentucky Counties, Cooperating.

LEXINGTON, KY 40546



Disabilities
accommodated
with prior notification



Location: Marion County Extension Office

6:00pm

August 28th

September 4th

October 2nd

November 6th

December 4th

January 8th

February 5th

March 12th

April 2nd

May 7th

Cooperative Extension Service
Agriculture and Natural Resources
Family and Consumer Sciences
4-H Youth Development
Community and Economic Development

Educational programs of Kentucky Cooperative Extension serve all people regardless of economic or social status and will not discriminate on the basis of race, color, ethnic origin, national origin, creed, religion, political belief, sex, sexual orientation, gender identity, gender expression, pregnancy, marital status, genetic information, age, veteran status, or physical or mental disability. University of Kentucky, Kentucky State University, U.S. Department of Agriculture, and Kentucky Counties, Cooperating.

LEXINGTON, KY 40546



Disabilities
accommodated
with prior notification



Martin-Gatton
College of Agriculture,
Food and Environment

AGES 5-8 EVERYONE WELCOME

CL^{VER}BUDS

5:00pm-6:00pm

Cloverbuds Calendar

September 8th

October 13th

November 10th

December 8th

January 12th

February 9th

March 9th

April 13th

Cooperative Extension Service
Agriculture and Natural Resources
Family and Consumer Sciences
4-H Youth Development
Community and Economic Development

Educational programs of Kentucky Cooperative Extension serve all people regardless of economic or social status and will not discriminate on the basis of race, color, ethnic origin, national origin, creed, religion, political belief, sex, sexual orientation, gender identity, gender expression, pregnancy, marital status, genetic information, age, veteran status, or physical or mental disability. University of Kentucky, Kentucky State University, U.S. Department of Agriculture, and Kentucky Counties, Cooperating.

LEXINGTON, KY 40546



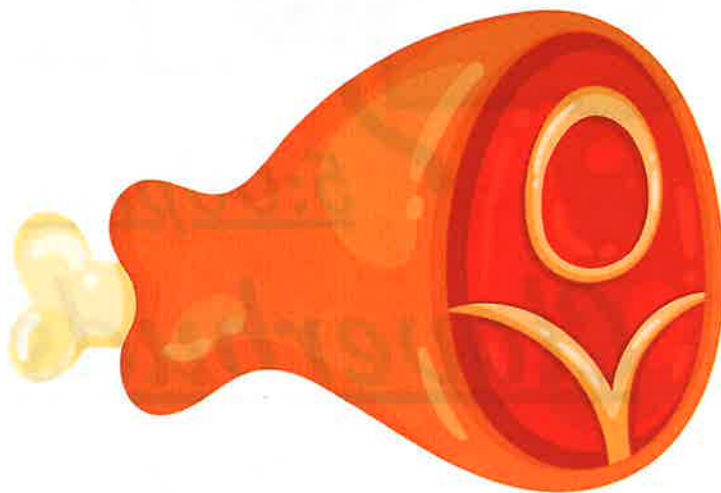
Disabilities
accommodated
with prior notification.



Marion County Country Ham

Important Dates

- Ham Washing
September 19th 6:00pm
- Ham Days Contest
September 22nd 5:00pm
- Country Ham Auction
September 27th 10:30am
- Auction Wrap-up
October 21st
6:00



Dear Country Ham Participants,
and Parents

We will have ham washing on
September 19th, to prepare for
the Ham Days Contest
happening on September 22nd.
Can't wait to see you there.

Wanting to Register as a bidder?

**Please Contact
Paighton Livers
(270)-972-9153**





The 2025 Marion County 4-H Country Ham Auction

Are you interested in supporting Marion County 4-H and its members? While also purchasing a delicious country ham perfect for your Thanksgiving or Christmas dinner table? Join us at our third annual ham auction!

	SEPTEMBER	
<i>Saturday</i>	27	<i>10:45 a.m.</i>
	2025	

***Marion County Ham Days Main Stage
on Main Street in Lebanon, KY***

To register or for more information, please contact Paighton Livers, Marion County 4-H Country Ham Volunteer, at (270) 972-9153 or plivers13@outlook.com



Martin-Gatton
College of Agriculture,
Food and Environment

**Are you interested in cows, goat, sheep, and pigs?
Would you like to show livestock at
a county or the state fair?**

If so, join us at our organizational meeting and potluck!

**Thursday, August 28th
6:00 P.M.**

**Marion County Extension Office
416 Fairgrounds Rd, Lebanon, KY**



**Marion County 4-H
Livestock Club is for
youth ages 5 to 18. You
do not have to own
livestock to be a
member of the
livestock club.**

**Please RSVP by Friday, August 22nd by calling or texting
Paighton at (270) 972- 9153 . Please let her know the number
attending and the side dish or dessert being provided.**

Cooperative Extension Service
Agriculture and Natural Resources
Family and Consumer Sciences
4-H Youth Development
Community and Economic Development

Educational programs of Kentucky Cooperative Extension serve all people regardless of economic or social status and will not discriminate on the basis of race, color, ethnic origin, national origin, creed, religion, political belief, sex, sexual orientation, gender identity, gender expression, pregnancy, marital status, genetic information, age, veteran status, or physical or mental disability. University of Kentucky, Kentucky State University, U.S. Department of Agriculture, and Kentucky Counties, Cooperating.
LEXINGTON, KY 40546




Disabilities
accommodated
with prior notification.

COUNTRY HAM WINNERS

2009 NON-SMOKED

SPEECH – 2ND SAWYER CAMBRON

OVERALL – 1ST SAWYER CAMBRON



2011 NON-SMOKED

HAM – 1ST ELIJAH LYVERS

2012 NON-SMOKED

HAM – 1ST LOIS JONES

HAM – 2ND AMELIA MATTINGLY

HAM – 3RD ANNA MATTINGLY

SPEECH – 2ND ANNA MATTINGLY

OVERALL – 1ST AMELIA MATTINGLY

OVERALL – 2ND ANNA MATTINGLY



2013 NON-SMOKED

HAM – 2ND KELI BLANFORD

2014 NON-SMOKED

HAM – 3RD KYLER WILLETT



OVERALL SMOKED AND NON-SMOKED GRAND CHAMPION HAM

ELIJAH LYVERS





Martin-Gatton
College of Agriculture,
Food and Environment



*-Kaylah Clark- Reserve
Grand Champion Ky Proud
Cow Class (Ayrshire)*



*-Kaylah Clark- 3rd
Jersey Cow Class
-Kaylah Clark- Jr. Showmanship
For Jersey*

*-Karma Clark- 7th Jersey
Heifer Class*

*-Xavier Clark- 3rd in Jersey
cow Class*

*-Xavier Clark- 5th Jersey
Heifer Class*

*-Jon Spencer Ford- Overall Youth
Dairy Herdsman*



Cooperative Extension Service
Agriculture and Natural Resources
Family and Consumer Sciences
4-H Youth Development
Community and Economic Development

Educational programs of Kentucky Cooperative Extension serve all people regardless of economic or social status and will not discriminate on the basis of race, color, ethnic origin, national origin, creed, religion, political belief, sex, sexual orientation, gender identity, gender expression, pregnancy, marital status, genetic information, age, veteran status, or physical or mental disability. University of Kentucky, Kentucky State University, U.S. Department of Agriculture, and Kentucky Counties, Cooperating.

LEXINGTON, KY 40546



Disabilities
accommodated
with prior notification.

Dairy Cattle Shows

Continued:

*-Jon Spencer Ford- Grand Champion
Ky. Proud 2yr old*

*-Jon Spencer Ford- 2nd
Showmanship*

*-Jon Spencer Ford- Supreme
Herdsman Award*

-Emma Thomas- 4th in showmanship

-Emma Thomas- 4th in Heifer class

*-Braxton Thomas- 4th in
showmanship*

-Braxton Thomas- 5th in heifer class



**Marion County
came in 4th
place in the top
county groups
for most
exhibitors for
the 4-H Dairy
Show!**



Loretto Motherhouse Farm & Marion County 4-H Livestock Club

PRESENT

Farm to Table Dinner

with all locally sourced produce and meat

OCTOBER
SATURDAY | 18 | 6:00 PM

The Old Tobacco Barn at Loretto Motherhouse
515 Nerinx Road Nerinx, KY, 40049

*\$35 per person
\$280 for a table of 8*

FEATHER AND FIELD FARMS GRILLED CHICKEN QUARTERS |
HILLS OF KINDNESS FARM SMOKED PULLED PORK |
MIXED GREENS SALAD | BUTTERED POTATOES | LOCAL SEASONAL
VEGETABLE | ROLLS | APPLE PIE WITH A SCOOP OF ICE CREAM



Paighton Livers
(270) 972-9153
plivers13@outlook.com





Martin-Gatton

College of Agriculture,
Food and Environment

THE MARTIN-GATTON COLLEGE OF AGRICULTURE, FOOD AND ENVIRONMENT IS AN EQUAL OPPORTUNITY ORGANIZATION WITH RESPECT TO EDUCATION AND EMPLOYMENT AND AUTHORIZATION TO PROVIDE RESEARCH, EDUCATION INFORMATION AND OTHER SERVICES ONLY TO INDIVIDUALS AND INSTITUTIONS THAT FUNCTION WITHOUT REGARD TO ECONOMIC OR SOCIAL STATUS AND WILL NOT DISCRIMINATE ON THE BASIS OF RACE, COLOR, ETHNIC ORIGIN, NATIONAL ORIGIN, CREED, RELIGION, POLITICAL BELIEF, SEX, SEXUAL ORIENTATION, GENDER IDENTITY, GENDER EXPRESSION, PREGNANCY, MARITAL STATUS, GENETIC INFORMATION, AGE, VETERAN STATUS, PHYSICAL OR MENTAL DISABILITY OR REPRISAL OR RETALIATION FOR PRIOR CIVIL RIGHTS ACTIVITY. REASONABLE ACCOMMODATION OF DISABILITY MAY BE AVAILABLE WITH PRIOR NOTICE. PROGRAM INFORMATION MAY BE MADE AVAILABLE IN LANGUAGES OTHER THAN ENGLISH. INQUIRIES REGARDING COMPLIANCE WITH TITLE VI AND TITLE VII OF THE CIVIL RIGHTS ACT OF 1964, TITLE IX OF THE EDUCATIONAL AMENDMENTS, SECTION 504 OF THE REHABILITATION ACT AND OTHER RELATED MATTER SHOULD BE DIRECTED TO EQUAL OPPORTUNITY OFFICE, MARTIN-GATTON COLLEGE OF AGRICULTURE, FOOD AND ENVIRONMENT, UNIVERSITY OF KENTUCKY, ROOM S-105, AGRICULTURE SCIENCE BUILDING, NORTH LEXINGTON, KENTUCKY 40546, THE UK OFFICE OF INSTITUTIONAL EQUITY AND EQUAL OPPORTUNITY, 13 MAIN BUILDING, UNIVERSITY OF KENTUCKY, LEXINGTON, KY 40506-0032 OR US DEPARTMENT OF AGRICULTURE, OFFICE OF THE ASSISTANT SECRETARY FOR CIVIL RIGHTS, 1400 INDEPENDENCE AVENUE, SW, WASHINGTON, D.C. 20250-9410.

Cooperative Extension Service
Agriculture and Natural Resources
Family and Consumer Sciences
4-H Youth Development
Community and Economic Development

Educational programs of Kentucky Cooperative Extension serve all people regardless of economic or social status and will not discriminate on the basis of race, color, ethnic origin, national origin, creed, religion, political belief, sex, sexual orientation, gender identity, gender expression, pregnancy, marital status, genetic information, age, veteran status, or physical or mental disability. University of Kentucky, Kentucky State University, U.S. Department of Agriculture, and Kentucky Counties, Cooperating.
LEXINGTON, KY 40546



**Disabilities
accommodated
with prior notification.**